



# Anytime Docs

Accounting System Integration

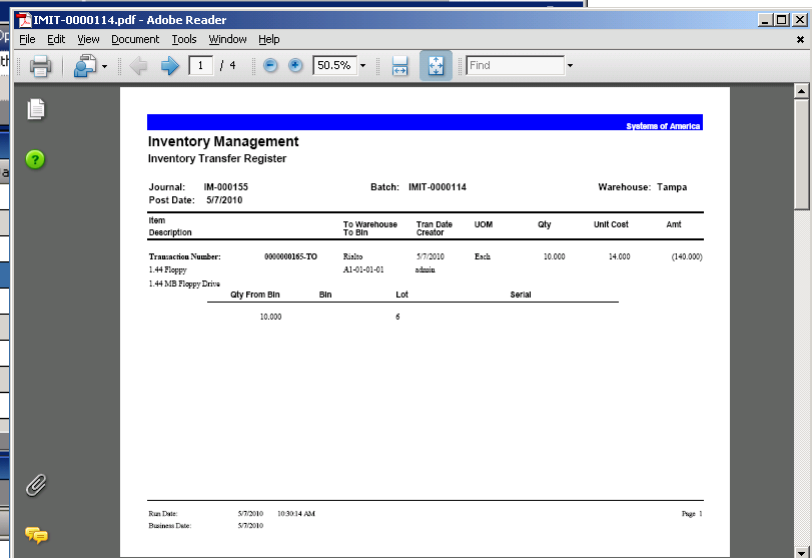
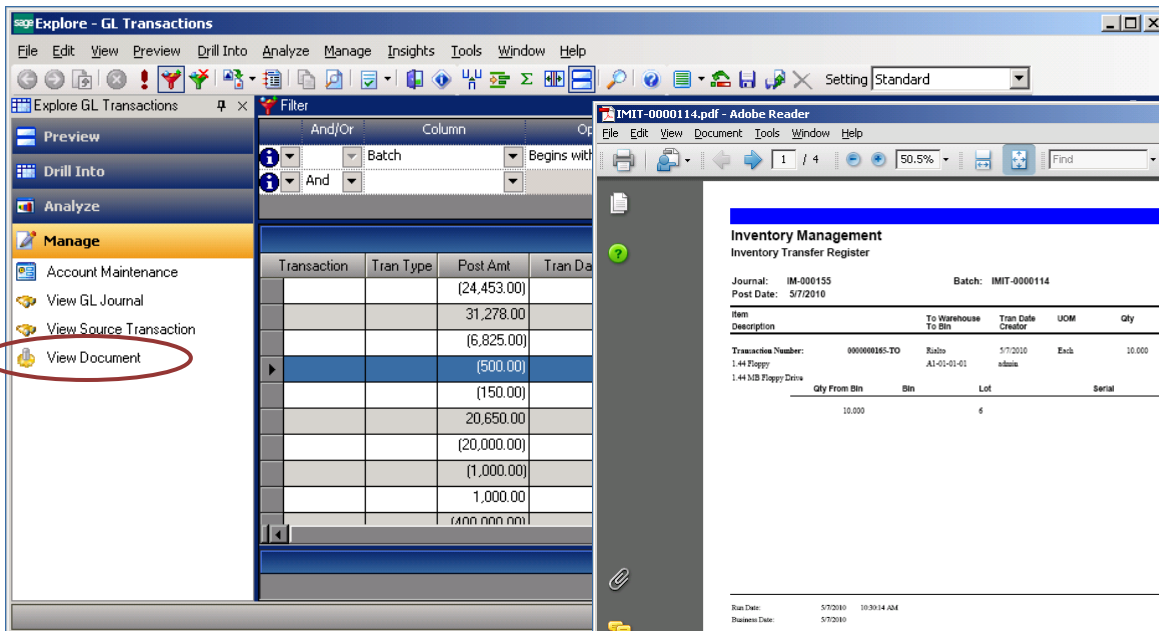
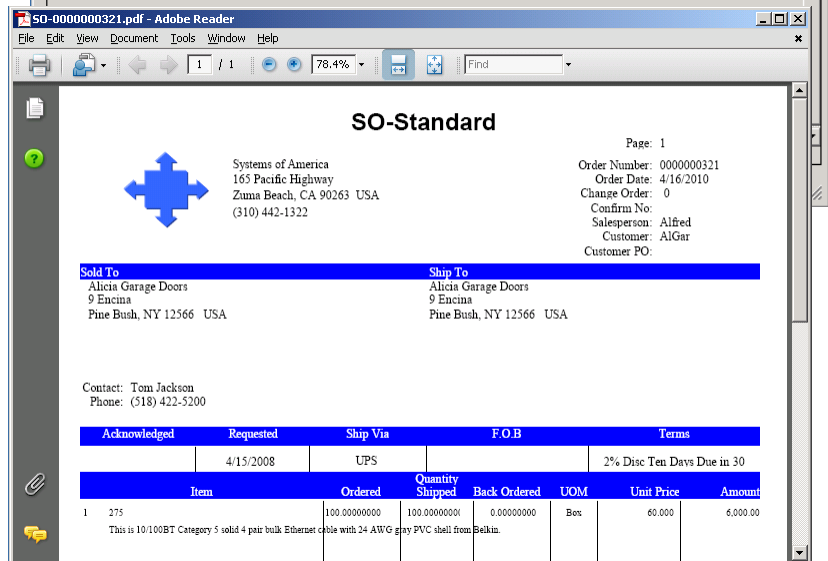
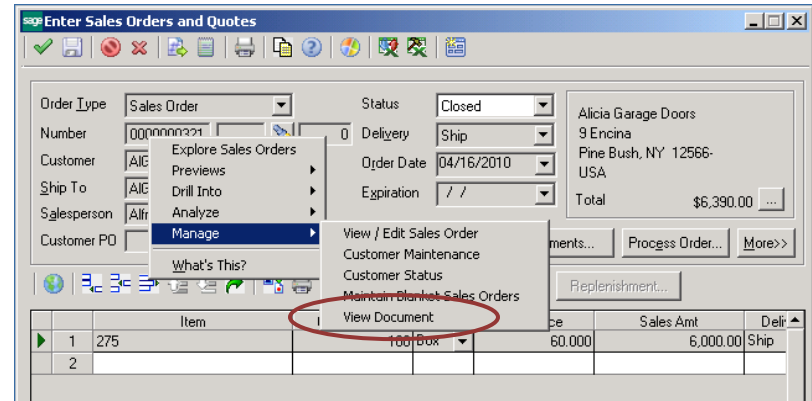
Mass PDF Invoice Creation

Anytime Collect Integration

Specialized for Sage 500 ERP

## Key Features

- Create PDF copies of invoices (when printing multiple invoices at one time or one at a time) from virtually any accounting or ERP system
- Store documents on your network, on Microsoft Sharepoint, or another location for retrieval.
- Advanced integration for Sage 500 ERP supports all business forms, registers, journals, and more.





# Anytime Docs

## Quickbooks & General Accounting Integration

### Anytime Collect Integration

Anytime Docs is often used in conjunction with Anytime Collect – providing direct access to original PDF copies of invoices for credit and collections activities. Learn more at [www.anytimecollect.com](http://www.anytimecollect.com).

### PDF Creation

Anytime Docs acts as a PDF print driver allowing you to print multiple invoices from Quickbooks or your accounting system with separate PDF files created for each unique invoice – not a single PDF containing all invoices.

### Hard Copies

PDF copies of documents are created when you originally print to the Anytime Docs printer from your accounting system. The print job can be redirected to a physical network printer for hard copies.

### Document Management

Invoices and documents are stored in a mapped network location or within Microsoft SharePoint. Use native Windows or Microsoft SharePoint search capabilities to find PDF copies within your network.

### Automatic Directories

Anytime Docs automatically creates document directories. Documents are filed in a single directory for accounting systems like QuickBooks that utilize non-standard report writers (not Crystal Reports). Systems that utilize Crystal Reports can be setup to create more complex directory structures.

### Document Security

Files stored in Windows directories are protected using native Windows security. Documents stored in a Microsoft SharePoint location are protected using SharePoint security settings.

### Microsoft SharePoint

Documents stored in the Microsoft SharePoint database can be viewed through Microsoft Office SharePoint Services

(MOSS) by setting up secured portals. Customers, vendors, and employees can be provided unique log-ins and restricted to view only their respective files via the portal. Microsoft SharePoint integration products and services are available upon request.

## Sage 500 ERP Integration

### Sage 500 ERP Business Forms

Anytime Docs includes expanded support for Sage 500 ERP (fka Sage MAS 500 ERP). Create PDF files for all business forms including invoices, statements, packing lists, shipping labels, bills of lading, purchase orders, quotes, sales orders, return material authorization, packing slips, vendor 1099 forms, vendor payments, and more.

### Sage 500 ERP Journals & Registers

Any journal and register in Sage 500 ERP can be printed through Anytime Docs to create an electronic of the file that can be reviewed at any time. All sub-reports for the journal or register are combined into a single PDF making it easy to review all related reports instead of searching for individual reports. Journals and registers are supported for General Ledger, Accounts Payable, Accounts Receivable, Inventory Management, Light Manufacturing, Advanced Manufacturing, Cash Management, and more.

### Sage 500 ERP View Documents

A right mouse click on the associated task and record in Sage MAS 500 will provide a context-sensitive link to view the PDF document. For example, you can select a sales order in Sales Order Entry – right-click and choose Manage – a new menu option called “View Document” will launch the default PDF viewer displaying the original document.

### Sage 500 ERP BIE Inquiry

A new Business Insights Explorer view is provided within Sage ERP 500 to view registers, journals, and all documents printed through e2b docs. The BIE View can be filtered and sorted like normal BIE tasks providing quick access to originating documents.